



SYNAGE 

SOLAR BUILDING SKIN





Suncol Facade



SUNCOL

Suncol Facade substitutes traditional construction material by seamlessly integrating into any facade. Its high energy efficiency changes the way buildings work and reduces CO2 emissions making the building sustainable.



Aesthetics



Cost benefit



Energy efficiency



Customisation



Key Product Features

1

Colours



2

Finishings



3

Design

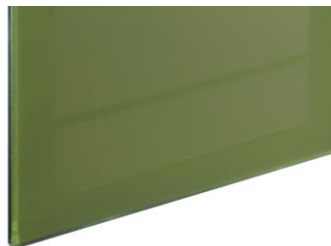
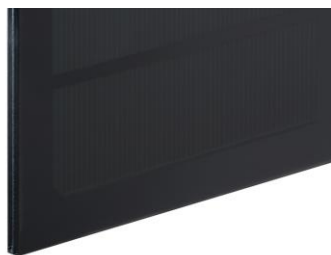
4

Dimension





Colours



Limitless colour variety.



Best equilibrium between aesthetics and efficiency.



Invariability of colour over time and resistance to weathering.



High energy yield given by minimum energy loss.



Completely eco-friendly colouring processes.





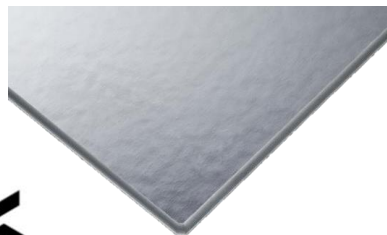
Finishings



Extra Clear Shining Glass
Typically used for facade or balcony photovoltaic modules.



Solar Glass
Typically used for roofing photovoltaic modules.



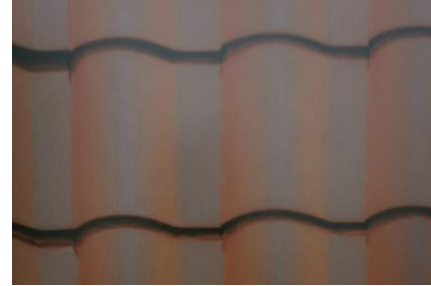
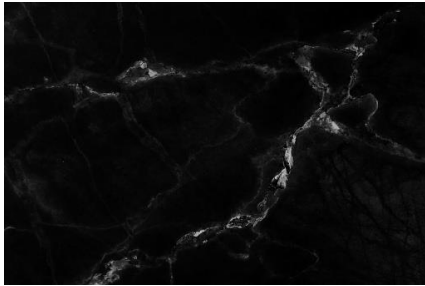
Satin Glass
Typically used for facade photovoltaic modules with anti-reflective finishing.



Structured Glass
Typically used for facade photovoltaic modules.



Design



Reproduction of image or texture on the glass.



Often used in historical buildings.



Dimension



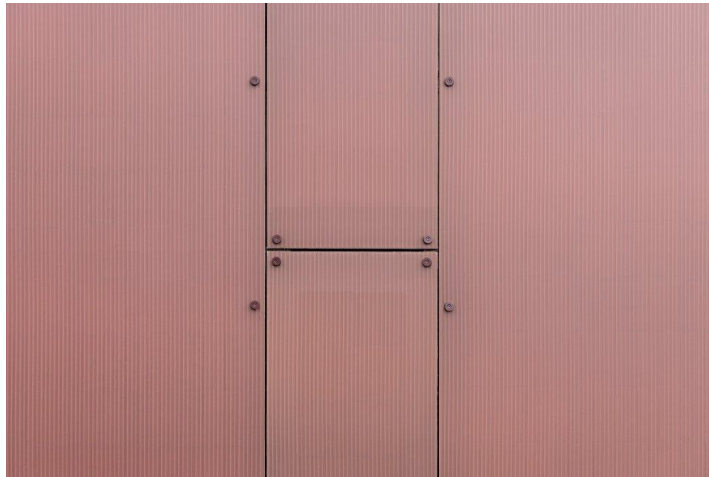
100% customisable size and shape.



All the building surface can be covered by modules.



Dummy modules: non active modules aesthetically identical to active ones.



Projects Overview

Multi-functional Centre of Pregassona *Lugano, Switzerland (2020-2021)*



Type of building: Public

Power installed: 220 kWp

Efficiency: 13.5%

Surface: 1'675 sqm

Number of installed modules: 806

Type of modules: Glass / Glass 4+4 mm

Colour: Light grey colour

Finishing: Front satin glass

Structure: Hidden aluminium mounting structure



Projects Overview



Projects Overview

Wohnüberbauung Männedorf Männedorf, Switzerland (2020-2021)



Type of building: Residential

Power installed: 80 kWp

Efficiency: 13.2%

Surface: Haus A 424 sqm - Haus B 423 sqm

Number of installed modules: 484 Haus A - 480 Haus B

Type of modules: Glass / Glass 4+4 mm

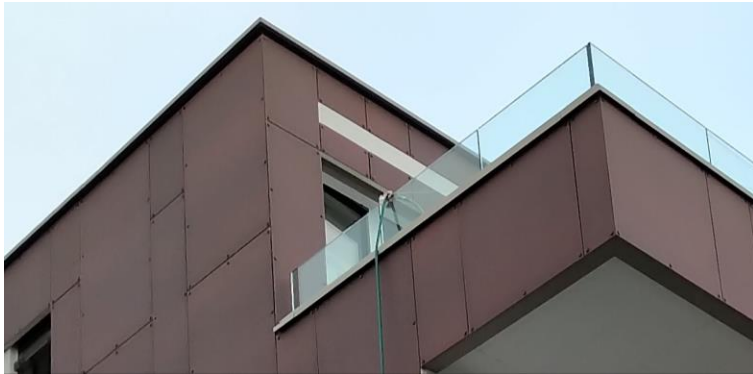
Colour: Brown / red colour

Finishing: Front structured satin glass type BA with vertical lines

Structure: Mechanical fixing through the glass



Projects Overview



Projects Overview

Solar Living Kloten Kloten, Switzerland (2020)



Type of building: Residential

Power installed: 26.7 kWp

Efficiency: 14.9%

Surface: 223 sqm

Number of installed modules: 408

Type of modules: Glass / Glass 4+4 mm

Colour: 3 different shades of green

Finishing: Front structured satin glass type BA with vertical lines

Structure: Vertical aluminium mounting structure



Projects Overview



Projects Overview

Winter World *Wallissellen, Switzerland (2020)*



Type of building: **Public**

Power installed: **50 kWp**

Efficiency: **13.5%**

Surface: **439.5 sqm**

Number of installed modules: **726**

Type of modules: **Glass / Glass 4+4 mm**

Colour: **Brown**

Finishing: **Front float satin glass**

Structure: **Vertical aluminium mounting structure**



Projects Overview



Projects Overview

WWZ Zug, Switzerland (2020)



Type of building: **Commercial**

Power installed: **4.5 kWp**

Efficiency: **12%**

Surface: **269 sqm**

Number of installed modules: **142**

Type of modules: **Glass / Glass 4+4 mm**

Colour: **Light grey**

Finishing: **Front structured shining glass type BA with horizontal lines**

Structure: **Framed aluminium mounting structure**



Projects Overview





Other Facade Projects



Kloten Milano
Kloten, Switzerland (2020)



Project Thalwil
Thalwil, Switzerland (2020)



Other Facade Projects



Project Opfikon
Opfikon, Switzerland (2018)



Zurich Insurance
Lugano, Switzerland (2018)





Thank You
Envision. Design. Go Solar.

